

# Animal Adaptations

## Grade Four and Six Education Program

### The Basics

Our education programs take between 1 and 3 hours, including a lunch break in the classroom or our picnic park. Programs can be shortened in length to accommodate groups, without a change in cost.

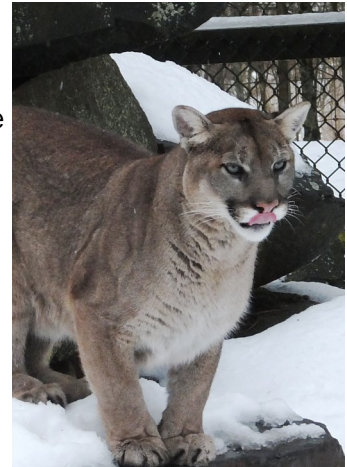
The cost for this program is \$2.00 per person. This includes teachers, chaperones, and students.

We recommend a chaperone to student ratio of 1:5.

Our site is wheelchair accessible.

### What to Expect:

During an Education Program at Shubenacadie Provincial Wildlife Park, you will be greeted by the Nature Interpreter facilitating the program. If needed, students may have a snack in a classroom before beginning the program. Students participate in a introduction activity exploring items from our biological collection representing animal adaptations. Some examples may include furs, tracks, and skulls. While participating in a guided park tour, students observe characteristic and behavioural adaptations of animals, suited to their habitats. This allows students to compare adaptations of both closely related animals and distantly related animals. Grade six classes also explore various flight adaptations of several bird species, investigating their advantages, which help to meet their needs. After the park tour, students will have the chance to share their experiences while having their lunch in the classroom, or you may choose to have lunch in our picnic area!



### Outcomes Addressed in 'Animal Adaptations'

#### Gr. Four- Science

- Compare the external features, behavioural patterns, structural and/or behavioural adaptations for an animal to survive a particular habitat, real or imagined (204-3,300-1,300-2,302-2)

#### Gr. Six- Science

- Identify characteristics and adaptations from living things that have led to flight designs (104-3, 106-3, 300-21)
- Classify and compare the adaptations of closely related animals living in their local habitat and in different parts of the world and discuss reasons for any differences (301-15, 104-5, 204-6)
- Identify changes in animals over time and research and model the work of scientists (107-11, 207-4, 301-16)

To book an Education Program, please complete the reservation form on our website.  
For more information email [LegacyCentre@novascotia.ca](mailto:LegacyCentre@novascotia.ca).